

# 48230KITS/48300KITS Assembly Instructions



**BASEN  GREEN**

## Packing list

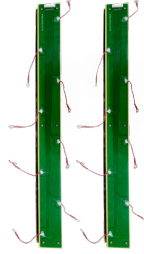
Please check the product carefully after receiving it, if any accessories are missed, please contact BASEN.



**A (Pre-installed)**  
Shell\*1



**B (Pre-installed)**  
Cover plate\*1



**C (Pre-installed)**  
Balance bars\*2



**D (Pre-installed)**  
Front plate\*1



**E (Pre-installed)**  
Handle\*2



**F (Pre-installed)**  
LCD Display\*1



**G (Pre-installed)**  
BASEN GREEN  
16S 200A BMS\*1



**H (Pre-installed)**  
Temperature  
NTC leads\*1



**I (Pre-installed)**  
16S voltage  
acquisition cable\*1



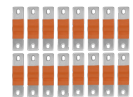
**J**  
USB-RS485  
communication cable\*1



**K**  
Fiberglass  
Insulation plate\*20



**L**  
Screws\*16



**M**  
Flexible busbar\*16



**N**  
Inverter communication cable\*1

**WARNING:**

If any parts are missing, damaged or worn, stop using this KITS. Repair the KITS with manufacturer supplied parts.

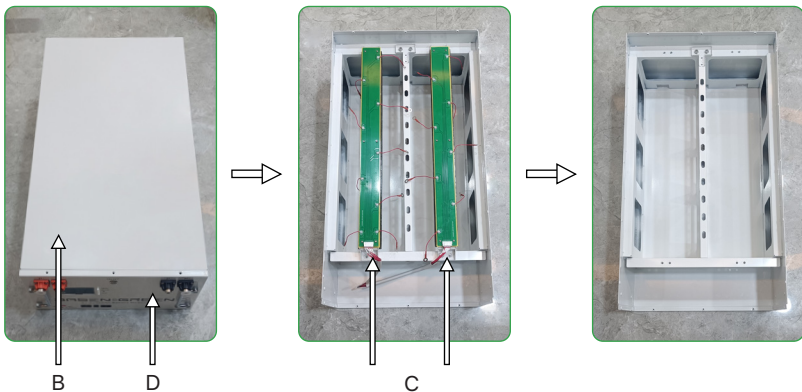
**IMPORTANT:**

Read these instructions carefully before beginning assembly. Failure to follow these instructions may result in serious injury.

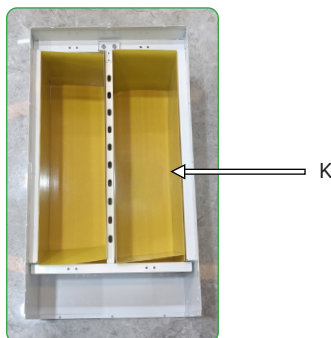
Carefully unpack all parts and identify them with the parts list before attempting to assemble the KITS. Remove all cardboard and plastic covering from DIY KITS parts. Please examine all packing material before discarding it.



1. Remove the BMS front plate(D), the cover plate(B), and the balance bars(C) as shown in figure 1.

**Figure 1**

2. Put the fiberglass insulation plate (K) as shown in figure 2.

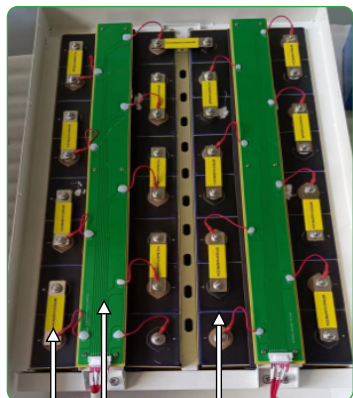
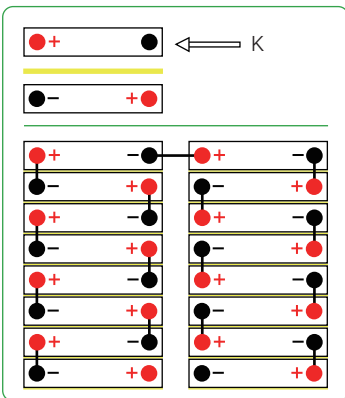
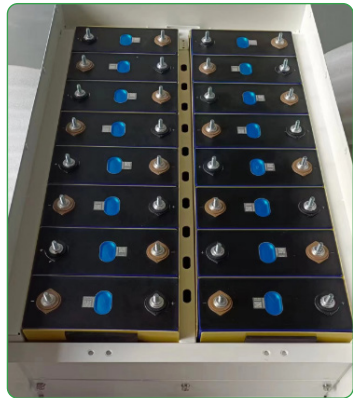
**Figure 2**

3. Put the cells into the case, connect the cells with the flexible busbars (M) and the balance bars(C) as shown in figure 3, and the cells should be divided by fiberglass insulation plate (K) as shown in figure 3.

Figure 3



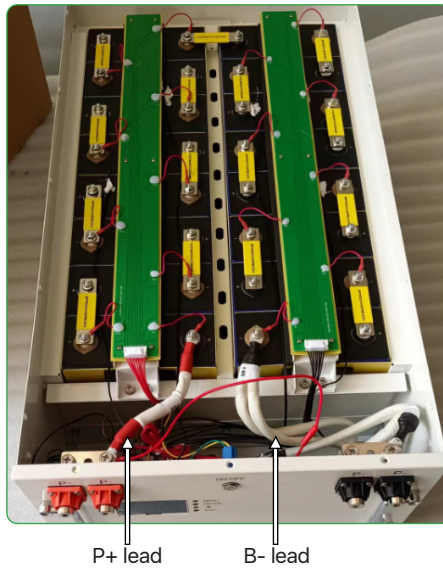
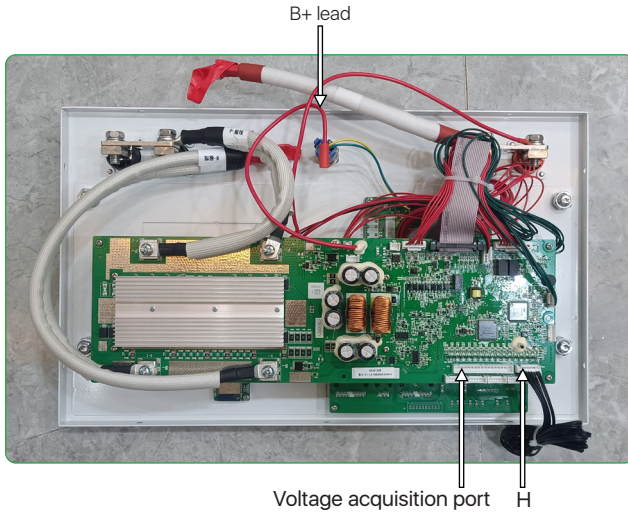
Cell difference within 20mV



M C K

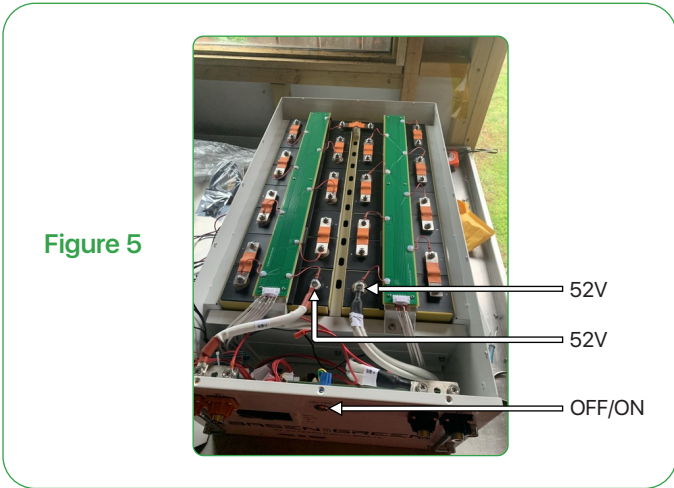
4. Put the BMS front plate(D) on, plug the voltage acquisition lead P+ lead to the main positive, and B- lead to the main negative, then put the B+ lead on, and stick the temperature NTC leads(H) on the cells by heat proof tape as shown in figure 4.

Figure 4



5. Check every connection, the voltage between the main positive and the negative is  $>52V$ , then turn the button on, the LCD and the indicator work out, then the assembly operation is completed, as shown in figure 5.

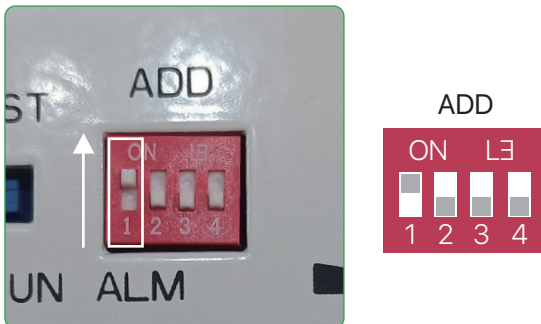
Unbox and install video: <https://www.youtube.com/watch?v=6FZf448Nujk&t=22s>



### 6. Operation of Upper System

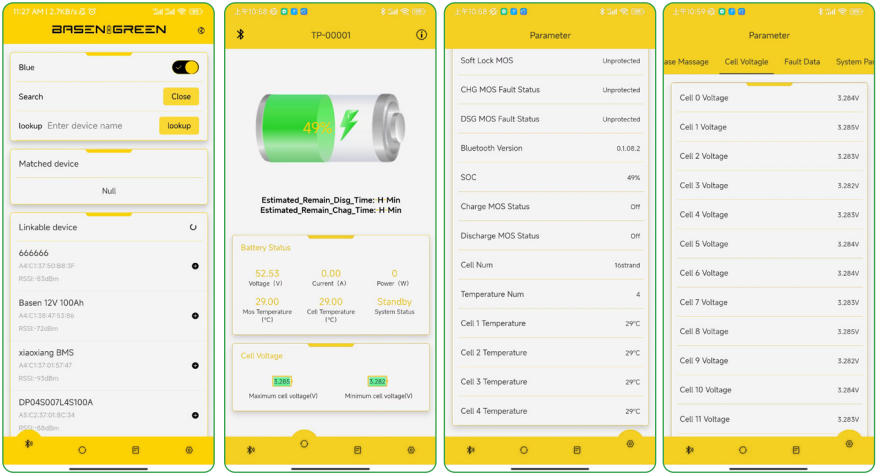
Firstly, connect the USB to RS485 Cable from Battery to the PC/Laptop, dip switch 1 on the front plate, download the PC software and open it.

Secondly, modify the language, and check the status of the battery pack





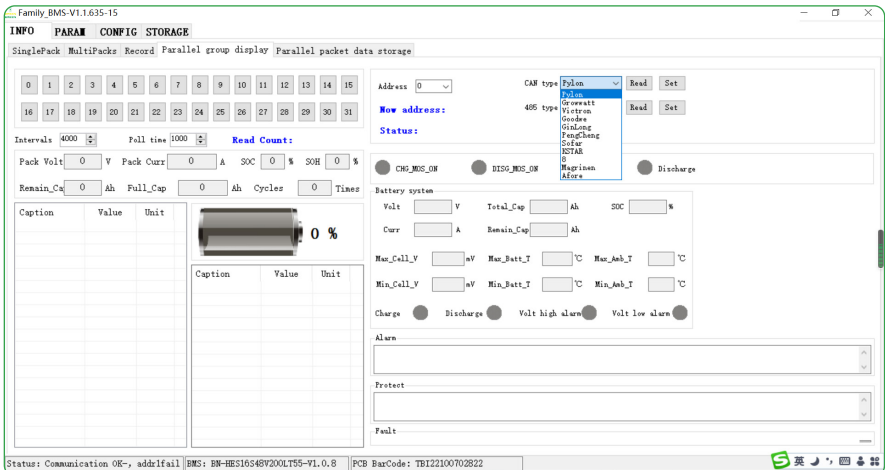
7. BASEN BMS is equipped with Bluetooth function, please contact our sales representative or visit our website to get the latest Bluetooth APP.



8. How to switch the communication protocol.

Open the PC software and follow the path:

INFO—Parallel Group Display—CAN Type/RS485 Type—Read—Choose the protocol—Set





## Communication compatible list:

		深圳市贝森科技有限公司 Shenzhen Basen Technology Co.,Ltd			
BASEN BMS Inverter Communication Protocol Matching Table					
Inverter Brand	Communication method	Protocol Name	Protocol Remarks	Communication波特率	Interface Definition
维克托-Victtron		CAN	Victtron-CAN-V1.00- 211135	Active Upload	500K 7H、8L
古瑞瓦特-SPF Growatt-SPF		485	Growatt BMS-RS485-protocol-1xSxP_ESSL_V2.01 Growatt BMS-RS485-protocol-V2.0	MODBUS Standard protocols	9600 1B、2A
古瑞瓦特-SPF Growatt-SPF		CAN	Growatt BMS CAN-Bus-protocol-low-voltage-V1.05	Active Upload	500K 4H、5L
古瑞瓦特-SPH Growatt-SPF		CAN	Growatt BMS communication protocol of growatt low voltage-V1.01	Active Upload	500K 4H、5L
德业 Deye		CAN	Deye LV-CAN communication protocol	Active Upload	500K 4H、5L
德业 Deye		485	485 Modbus Protocol(4)-deye	MODBUS protocols	9600 1B、2A
尚科-Scolar		CAN	Growatt BMS CAN-Bus-protocol-low-voltage-V1.05	Active Upload	500K 4H、5L
国德威-Goodwe		CAN	Goodwe-CAN-V1.7-220228-SolarinverterFamily-EN	Active Upload	500K 4H、5L
日月元-Voltronic Power		485	Voltronic Power-485-V1.03-200325	MODBUS protocols	9600 3B、5A
首航-SOFAR		CAN	SOFAR-CAN-V1.00-211117-Rev6	Active Upload	500K 1H、2L
锦浪-Solis		CAN	Solis-CAN-V1.0-191228-lowVoltage	Active Upload	500K 4H、5L
鹏城-Luxpower		CAN	Luxpowertek Battery CAN Protocol -2021	Active Upload	500K 4H、3L
派能-Pylontech		485	Pylon-485-V3.5-161216-low voltage protocol	1363	115200 1B、2A
派能-Pylontech		485	Pylon-485-V3.5-161216-low voltage protocol	1363	9600 1B、2A
派能-Pylontech		CAN	Pylon-CAN-V1.2- 180408 -lowVoltage	Active Upload	500K 4H、5L
硕日-Srne		485	shuori BMS Modbus Protocol for RS485 V1.3(2020-11-24)	MODBUS	9600 7A、8B
美世乐-Must		CAN	PV1800F-CAN communication Protocol1.04.04	Active Upload	100K 6H、5L
艾思玛-SMA		CAN	SMA-CAN-V1.0-0-210630-FSS-ConnectingBat-TI-en-20W	Active Upload	500K 4H、5L
索瑞德-SOROTEC		CAN	CAN Protocol 1.0(SOROTEC Protocol)	MODBUS Standard protocols	500K 4H、5L
索瑞德-SOROTEC		485	Protocol between Sorotec Inverter and Lithium Battery (RS485)	Active Upload	500K 1B、2A
SOL-ARK		CAN	Sol-Ark CAN Bus Protocol V1.2.pdf4-25-22	Active Upload	500K 4H、5L
迈格瑞能-MEGAREVO		CAN	Shenzhen MEGAREVO Hybrid Inverter-5K BMS Protocol V1.01	Active Upload	500K 4H、5L
MPP Solar		485	BMS 485 communication protocol 20200325(2)	MODBUS	9600 1B、2A
拓宝-TBB		CAN	CAN BUS Protocol of TBB Lithium Battery BMS Platform V 1.1	Active Upload	500K 4H、5L
盛能杰-Senergy		CAN	SenergyINV&BMS_CAN_Protocols	Active Upload	4H、5L

# Need additional information?

Just Contact BASEN!



**BASEN  GREEN**

**BASENGREEN  
YOUR RELIABLE POWER**



Fax: (+86)0755-84737145



Tex: (+86)130 0887 9993



Email: [info@Basengroup.com](mailto:info@Basengroup.com)



Website: [www.basenpower.com](http://www.basenpower.com)



Shenzhen Basen Technology Co., Ltd.



Add: Room 303, Building 3, 1980 Culture and Technology Industrial Park,  
Donghuan Road, Longhua District, Shenzhen